

Buddha - A different view

Nadeem Zuberi

tained thrones, in the rigid pose of yoga with the feet crossed at the ankles while the hands form the characteristic Buddhist mudras.

He presented Buddha with long supple and be-jeweled arms and flexible fingers seem to act with weariness and the almond eyed face gaze forth with sleepy languid expressions, in mystical concentration. He tried to change the serious tone related to Buddha by adding different characters and objects such as flowers, garden, female figure along side Buddha in bright colours in his paintings.

Thus the Buddha is painted in a unique new way and each painting is more eventful and picturesque. His artworks take you away from the traditions and forms related to Buddha hence a new concept of visualizing Buddha in the modern world.

You can see Buddha with long hair or wearing a turban in Irfan's paintings, with which new generations is not accustomed. The youngsters have a conclusion about Buddha's personality otherwise, they think of him as a monk.

But Buddha is never depicted with a shaved head, as the other Buddhist monks are; his short hair is clothed either in waves or in taut curls over his whole head and he wear heavy ear-rings.

The style of the robe is some what different too. The cloak, which covers all but the right shoulder is often bared is change in some of the paintings the right shoulder is half bare or both the shoulders are bare.

He has created serene and spiritual miniatures of Buddha in pen and ink and water colour. His paintings have uniqueness of themes and different style of execution.

The structures in his paintings may appear simple, but his work nevertheless possesses an attraction. The glimpses of the dramatic transformation of Buddha in vibrant colours, dominantly in green, red, ochre and brown are eye catching.

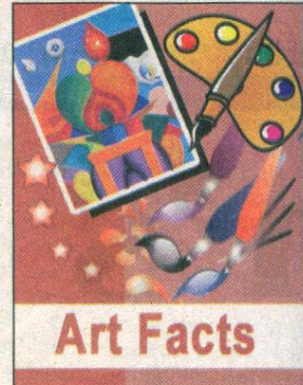
The theatrics of different forms and colours are juxtaposed

posed in varying rhythms, using contrasts of light and shade or closely matching tones.

They are arranged into larger patterns of order and these shapes are often linked with the traditional connotations of Buddha.

What makes his work so unique is its combination of rigorous structural control with the expressive power of colour.

"My present work is a tribute to the Buddha. The simple forms stand amidst a brilliance of colours derived from nature in order to provide a glamorous

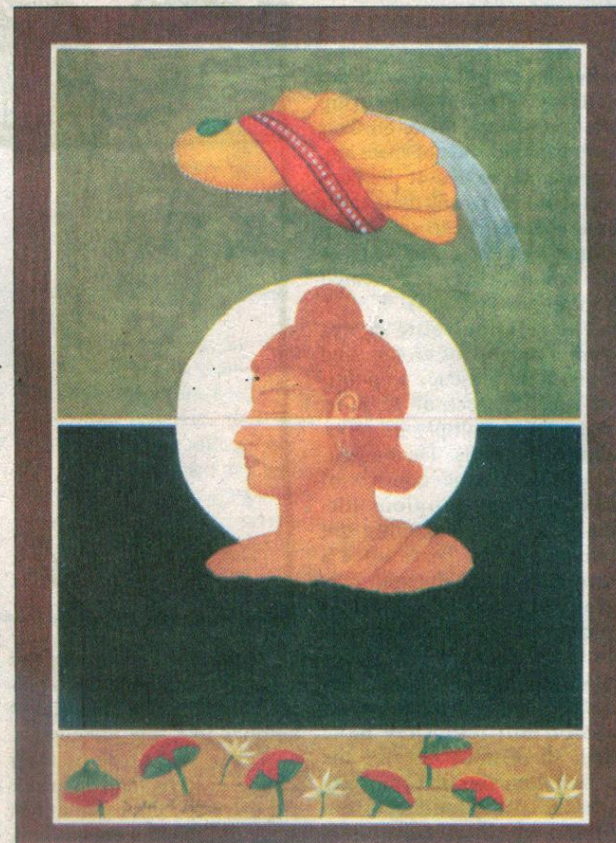
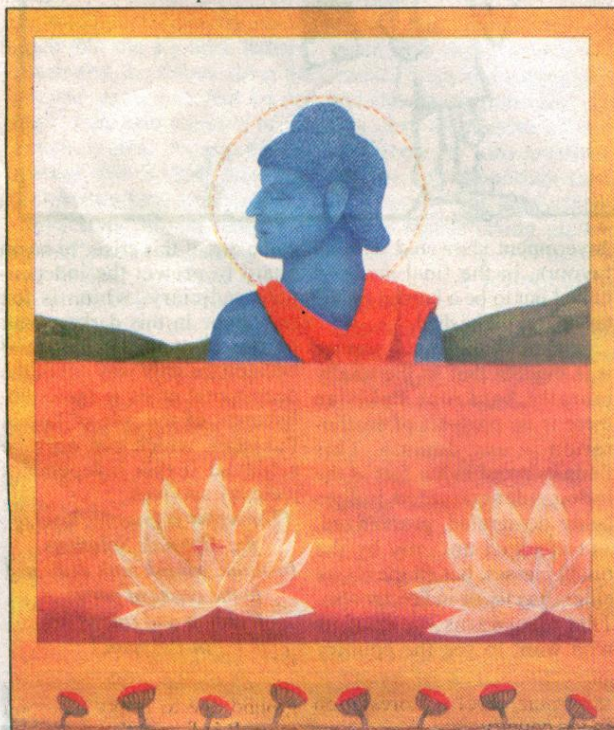


it can be manipulated," he added.

He has also achieved awards

Buddha's teachings and his magnetic personality is an object of reverence for many around the world. For centuries myths and events in Buddha's life is the subject matter for art. But Syed Abdul Irfan's vision of Buddha is some what different. Experimenting with various themes and techniques he has introduced a fusion of innovative ideas through colours and symbolism.

Buddha's sculptures and paintings are created in various postures over the years but the seated figure becomes much popular. Irfan a young miniature artist in his 'Buddha' series of paintings instead of portraying the traditional figures of Buddha sit on massive cur-



setting. I work with the ecstasy in expression achieving an intensified brilliance," said Irfan.

"My work is the interpretation of my imaginations. In this series of my artworks, I have tried to create a charismatic awareness about Buddha in miniature painting and made an effort to explain to what extent

in appreciation of his works, Special Prize in Sadequain Award Exhibition in 2006, Best Performance Award in PTV in 2007 and First Prize in All Degree College Art Exhibition in 2001. He has many group and solo exhibition to his credit at home and abroad in Dubai and India.

nadeemzuberi71@gmail.com